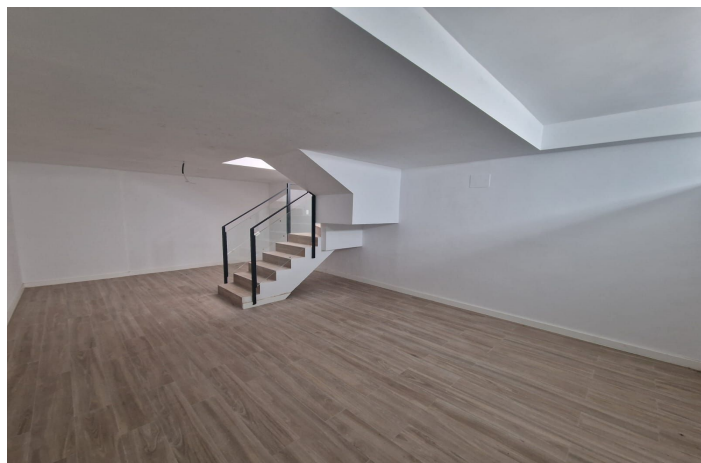
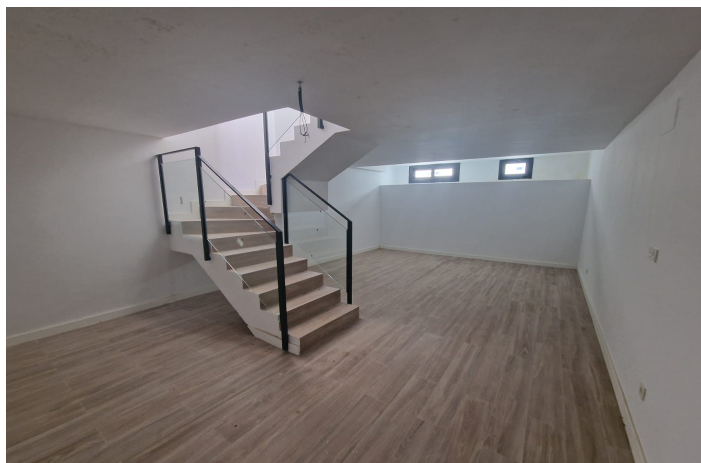




Semi Detached Villa for sale in Manilva, Manilva

385,000 - 490,000 €

Reference: R5110435 Bedrooms: 2 - 3 Bathrooms: 2 - 3 Plot Size: 138m² - 240m² Build Size: 128m² - 207m²





Costa del Sol, Manilva

VILLA 1 207.45m² built on a 240m² plot. It has 3 bedrooms, 3 bathrooms, living room, kitchen, terrace, private garden, private garage for 2 vehicles, basement with natural light and excellent sea views. SEMI-DETACHED HOUSE 2 128.25m² built on a 153m² plot. It has 2 bedrooms, 2 bathrooms, living room, kitchen, terrace, private garden, parking area within the plot, basement with natural light and excellent sea views. SEMI-DETACHED HOUSE 3 128.25m² built on a 138m² plot. It has 2 bedrooms, 2 bathrooms, living room, kitchen, terrace, private garden, parking area within the plot, basement with natural light and excellent sea views. SEMI-DETACHED HOUSE 5 128.25m² built on a 156m² plot. It has 2 bedrooms, 2 bathrooms, living room, kitchen, terrace, private garden, parking area within the plot, basement with natural light and excellent sea views.



Features:

Features

Private Terrace
Fitted Wardrobes

Setting

Close To Shops

Garden

Private

Climate Control

Cold A/C
Hot A/C

Condition

New Construction

Parking

Garage
Private

Views

Sea
Mountain
Garden

Kitchen

Fully Fitted

Category

New Development